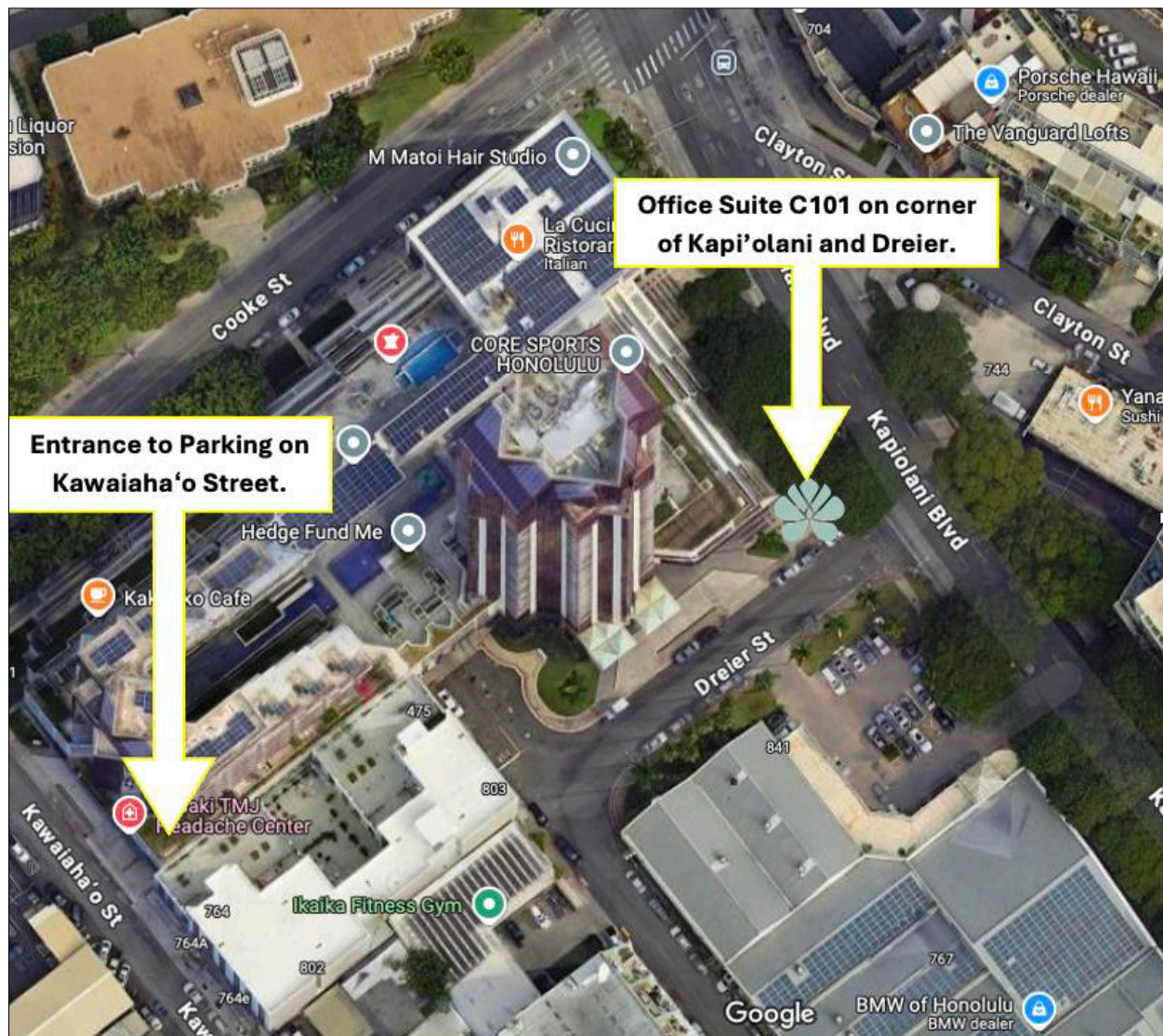




**We're Ready to Welcome You!** Every part of your experience with us matters including how you arrive. To make your visit as smooth and welcoming as possible, we've thoughtfully prepared easy parking directions just for you.

We are in the Imperial Plaza Building at 725 Kapi'olani Boulevard, Suite C101, Honolulu, HI 96813, at the intersection of Kapi'olani Boulevard and Cooke Street.

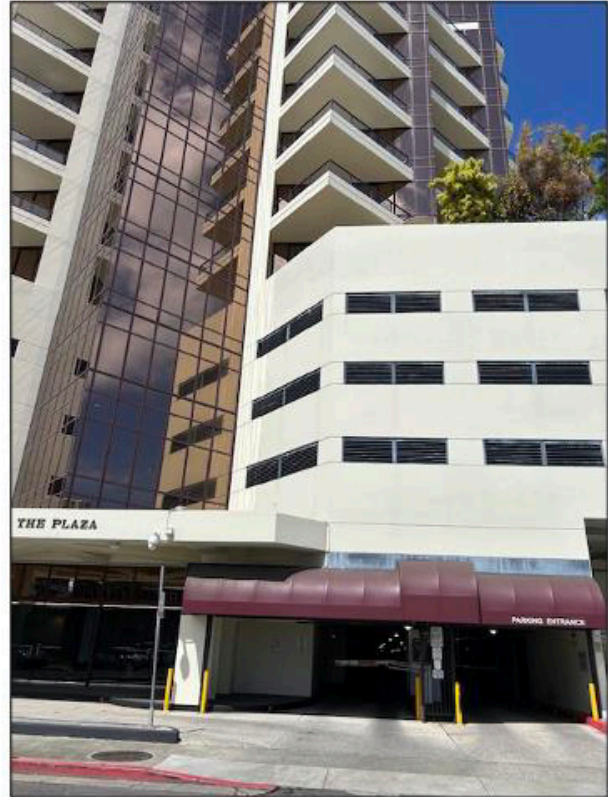


Our suite, C101, faces Kapi'olani Boulevard and Dreier Street, directly across from Yanagi Sushi, the Vanguard Lofts, and the Porsche and BMW dealerships.



Because Imperial Plaza serves both private residences and commercial spaces, the parking garage has two entrances Dreier Street and Kawaiaha'o Street. The directions provided guide you to the (Kawaiaha'o Street) entrance and parking options we believe will offer you the smoothest and most convenient experience.

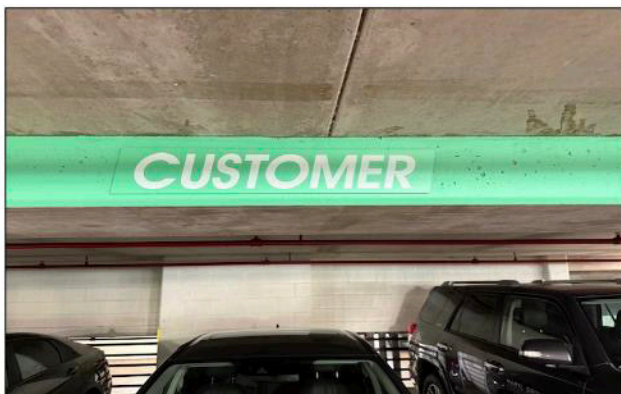
## Customer Parking & Walking Directions



The Imperial Plaza Building and Parking Garage Entrance on Kawaiaha'o Street.

### 1. Parking Entry

- Stop at the parking attendant booth upon entry.
- Receive a parking ticket and a CUSTOMER dashboard tag.
- Where to Park (Levels 1A–3A)
- Drive forward and park in any stall marked **CUSTOMER (in green)**.
- Place the CUSTOMER tag visibly on your dashboard.
- Bring your parking ticket with you for validation at your appointment.

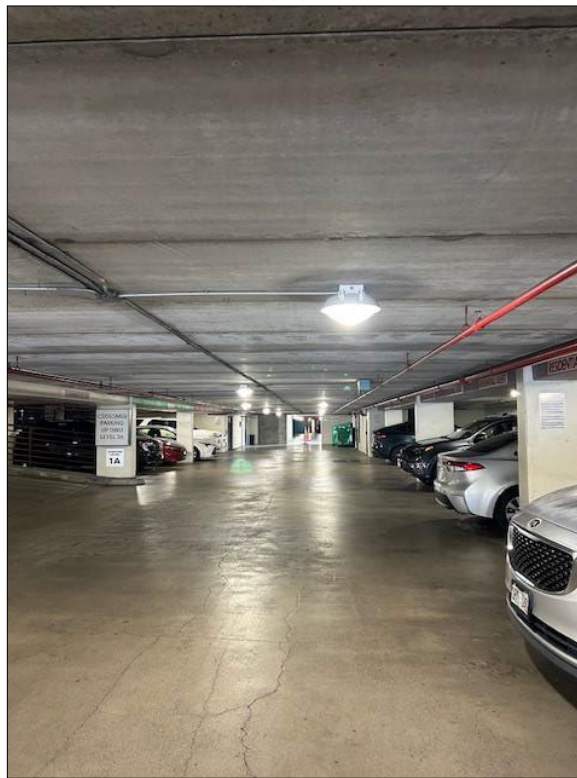


## **Walking Directions to Our Office Suite C101**

Similar to the entrance of the parking garage, there are two designated exits: Cooke Street and Kapi'olani Boulevard. Please note that the central stairwell within the garage leads to the Cooke Street exit, which results in a significantly longer route to the Office Suite. For your convenience, we recommend following the provided directions below toward the Kapi'olani Boulevard exit which offers the most direct and efficient access.

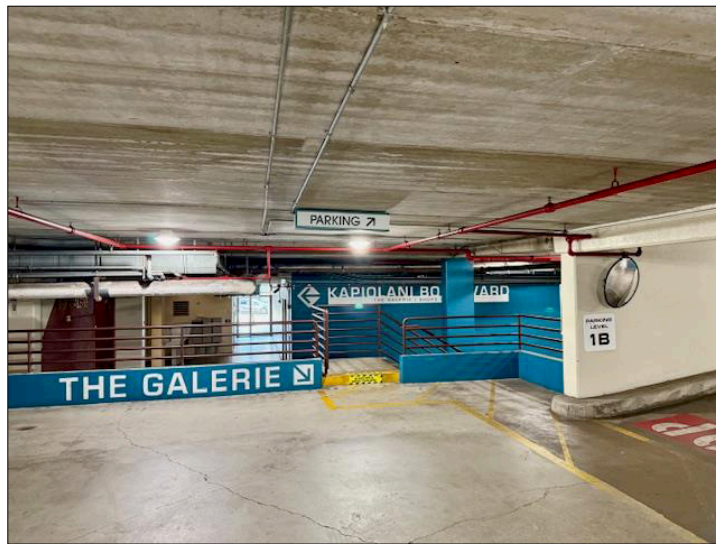
### **2. From Level 1A**

- a. From your parked vehicle, walk away from the attendant booth, heading toward the rear of the garage and a teal wall labeled The Galerie / Kapi'olani Boulevard.
- b. At the end of the garage, turn left onto the pedestrian walkway.
- c. Continue to the far end, where you'll see a burgundy wall labeled The Galerie and the parking garage exit—proceed toward that exit.
- d. Proceed to step 7a below.



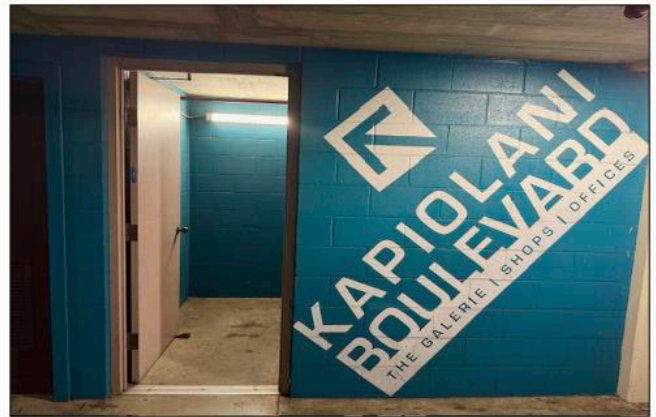
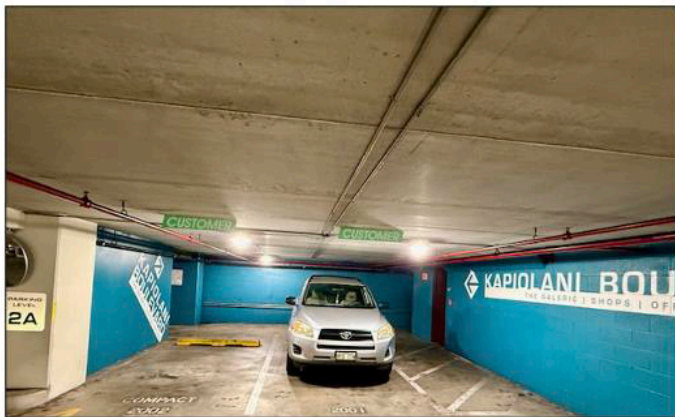
### **3. From Level 1B**

- a. Walk to the far end of the garage, opposite the entry side, where you'll find a short stairwell leading down to Level 1A – Kapi'olani Blvd & Galerie Shops.
- b. At the bottom of the stairs, turn left. You'll see a burgundy wall labeled The Galerie and the parking garage exit—proceed toward that exit.
- c. Proceed to step 7a below.



#### 4. From Level 2A

- From your parked vehicle, walk toward the rear of the garage and the teal wall labeled The Galerie / Kapi'olani Boulevard.
- Take the stairwell down to Level 1A – Kapi'olani Blvd & Galerie Shops.
- At the bottom of the stairs, you'll see a burgundy wall labeled The Galerie and the parking garage exit—proceed toward that exit.
- Proceed to step 7a below.



#### 5. From Level 2B

- From your parked vehicle, walk toward the rear of the garage and a teal wall labeled Kapi'olani Boulevard / Galerie Shops and Offices.
- Take the stairwell down to Level 1A.
- At the bottom of the stairs, turn left. You'll see a burgundy wall labeled The Galerie and the parking garage exit—proceed toward that exit.
- Proceed to step 7a below.

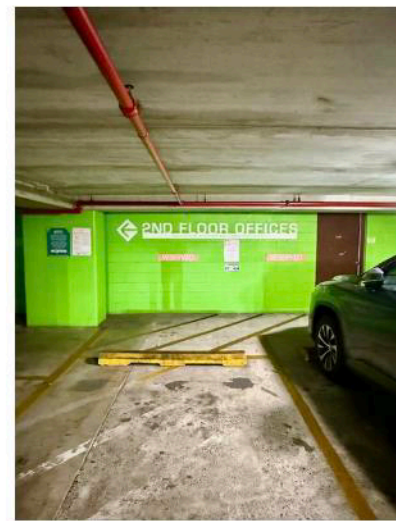
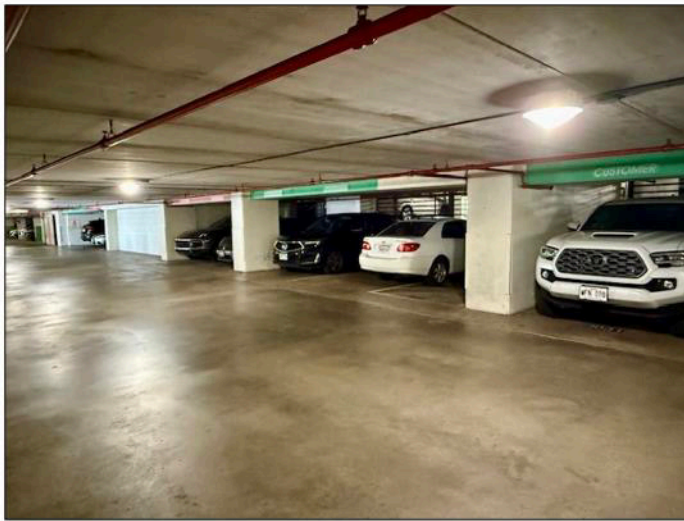




## 6. Additional Directions for Parking Level 3A

***Note: Parking Level 3A is the only level that requires elevator access to reach our office.***

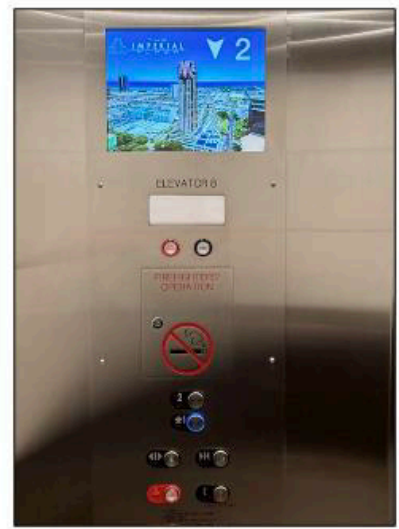
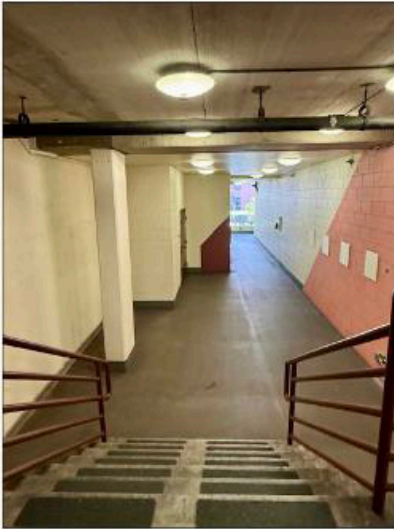
- a. After parking, walk toward the bright green wall labeled “2nd Floor Offices.”



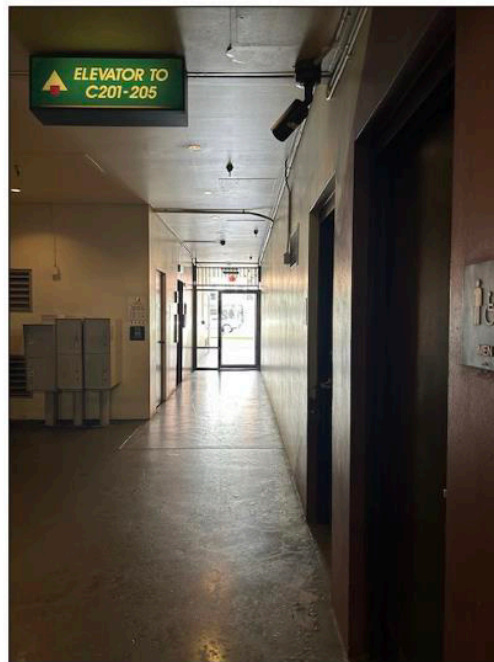
- a. Take the stairs down to the 2nd floor, where you'll find the elevator lobby.
- b. From there, take the elevator down to the 1st floor.
- c. Exit the elevator and turn left to go through the glass doors leading outside.
- d. Proceed to step 8a below.

## 7. Final Steps to Reach Our Office Suite C101

- a. From the Parking Garage Exit Corridor (Levels 1A–2B)
- b. Make a right at the burgundy wall labeled The Galerie, proceed through the exit corridor of the parking garage.



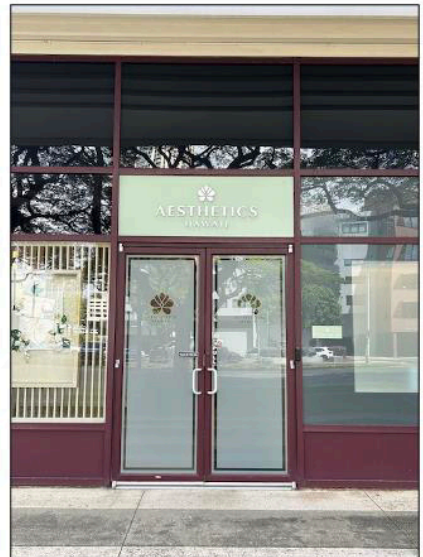
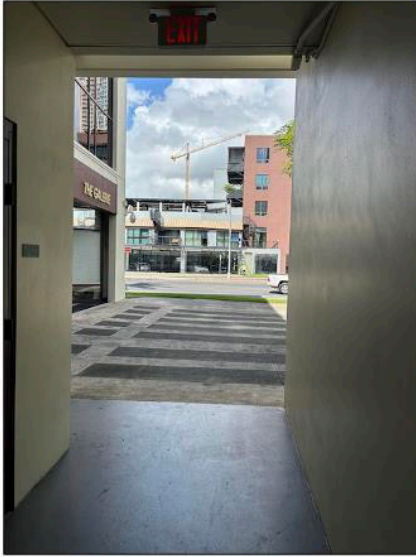
- c. You'll pass mailboxes, restrooms, and an elevator on your way to the glass exit door.
- d. Exit through the glass doors onto Kapi'olani Boulevard.



- e. Once outside, turn right and walk toward the BMW dealership.
- f. Continue straight—our office suite, C101, is located at the far end of the block, on the corner.

## 8. From the 1st Floor Glass Door Exit (Level 3A)

- a. After exiting through the glass doors, turn right and walk toward the BMW dealership.
- b. Continue straight—our office suite, C101, is located at the far end of the block, on the corner.



## Congratulations — You Made It!

If you find yourself lost or unsure despite the directions above, please don't hesitate to contact our office at **(808) 633-8585**. We're here to help guide you the rest of the way.